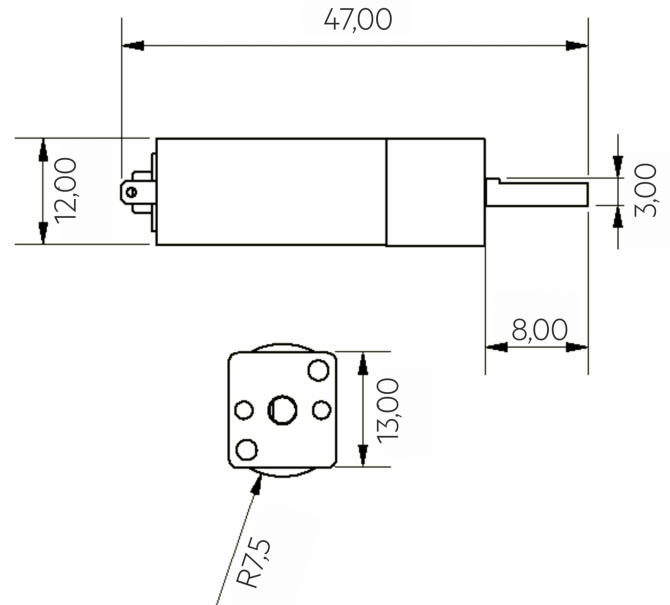


JSumo DC Motor Datasheet



MODEL	CORE 6V 750 RPM	
Type	Mini Gear DC Motor	
	Value	Units
Nominal Voltage:	6	Volt
Watt:	4.2	Watt
RPM:	750	Rev/Min.
Gear Ratio:	26:1	ul
Continous Torque @6V	0.95	kg-cm
Stall Torque @6V	2.8	kg-cm
Dimensions:	47x15x10	mm
Mass:	21	gr.
No Load Current @6V	120	mA
Stall Current @6V	3500	mA
Shaft Type	D Type	-
Shaft Diameter Ø	3	mm
Shaft Length	8	mm

COMMENTS: SUITABLE FOR MINI SUMO ROBOTS, LINE FOLLOWER ROBOTS WHICH REQUIRE HIGH TORQUE AND SPEED BALANCE. 3MM D SHAFT MAKES MOTOR EASY TO ATTACH TO LOTS OF SILICONE AND HOBBY ROBOT WHEELS.